

SERPENTINE

VISITING SERPENTINE

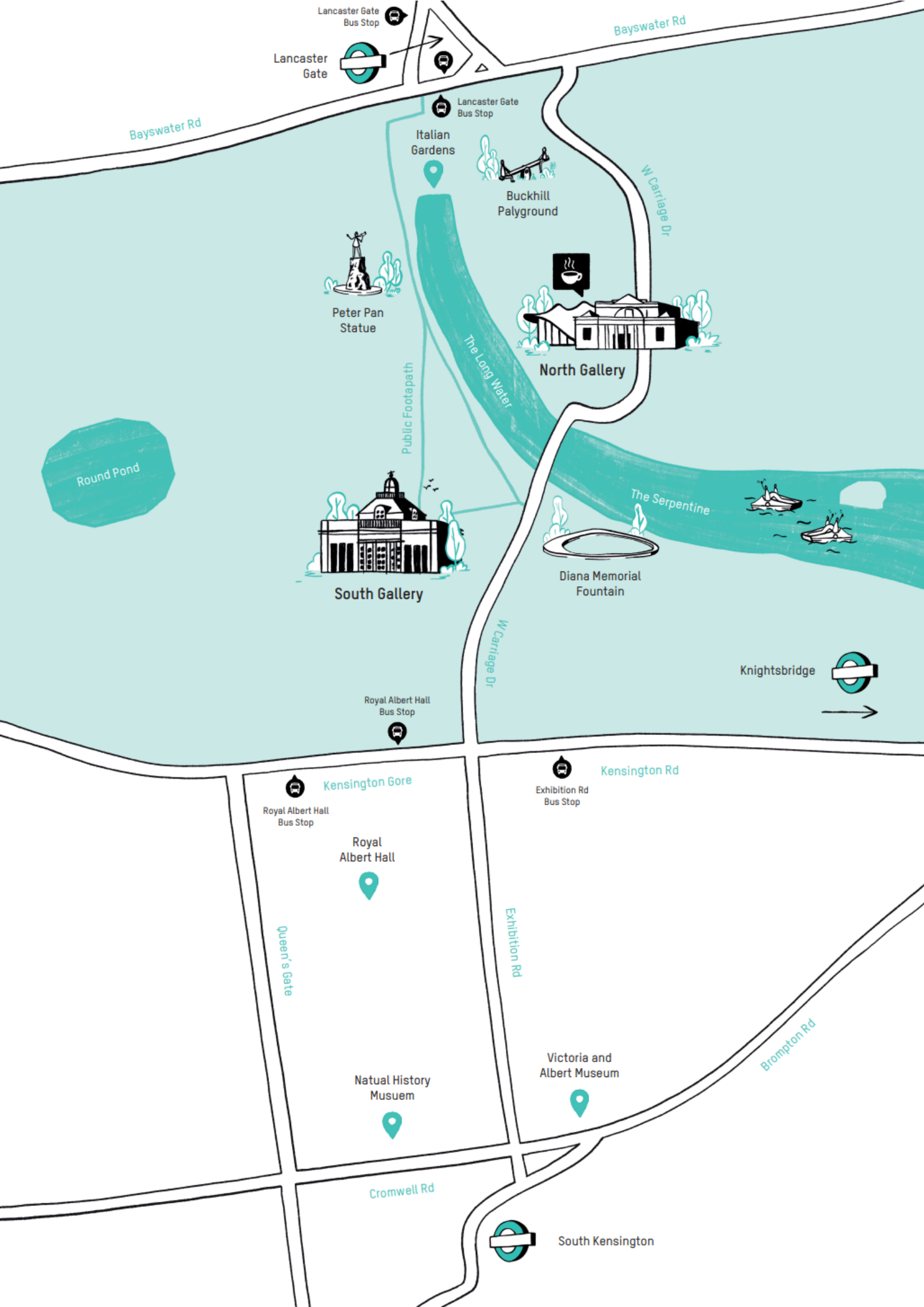
A VISUAL STORY

This is a visual story to show you what to expect when you visit Serpentine.

HOW TO GET HERE

Serpentine is located within Kensington Gardens and is free to visit. Walk up visitors are always welcome. There are also free tickets available to book on Serpentine's website for guaranteed entry during busy times.

There are two Serpentine Galleries to visit. They are Serpentine South and Serpentine North. They are 0.3 miles from each other.



Lancaster Gate Bus Stop

Lancaster Gate

Bayswater Rd

Bayswater Rd

Italian Gardens

Lancaster Gate Bus Stop

Buckhill Palyground

Peter Pan Statue

Public Footpath

The Long Water

North Gallery

W Carriage Dr

Round Pond

South Gallery

The Serpentine

Diana Memorial Fountain

Knightsbridge

Royal Albert Hall Bus Stop

W Carriage Dr

Kensington Gore

Royal Albert Hall Bus Stop

Royal Albert Hall

Kensington Rd

Exhibition Rd Bus Stop

Queen's Gate

Exhibition Rd

Natural History Musuem

Victoria and Albert Museum

Brompton Rd

Cromwell Rd

South Kensington

South Kensington

THE NEAREST TUBE STATIONS ARE LANCASTER GATE AND SOUTH KENSINGTON.

LANCASTER GATE – Central Line.

Bus routes – 94, 274, 148

SOUTH KENSINGTON – Piccadilly, District and Circle Line.

Bus routes – 9, 390

NEAREST ACCESSIBLE STATIONS:

PADDINGTON – National Rail, Bakerloo, Elizabeth Line, Circle and District Line.

KNIGHTSBRIDGE – Piccadilly Line.

For more travel information please visit TFL to plan a journey.

[Plan a journey - Transport for London](#)

OPENING TIMES:

Monday: 12:00 - 18:00.

Tuesday – Friday: 10:00 – 18:00

Saturday – Sunday: 10:00 – 19:00

Our exhibitions and Pavilion change regularly – for updated information please see our What's On page:

[What's On - Serpentine Galleries](#)

SERPENTINE SOUTH:



ASKING FOR HELP

This is a Ticket Officer.

They will be there to greet you when you arrive.



This is a Gallery Host.

They wear a black uniform and a Serpentine Lanyard.

They can be found throughout the exhibition.

They can help with any questions you might have.



KOENIG BOOKSHOP:

The Koenig Bookshop can be found at Serpentine South.



SERPENTINE NORTH:



ASKING FOR HELP

This is a Ticket Officer.

They will be at the entrance to greet you when you arrive.

All Visitor Experience staff members wear a Serpentine Lanyard.

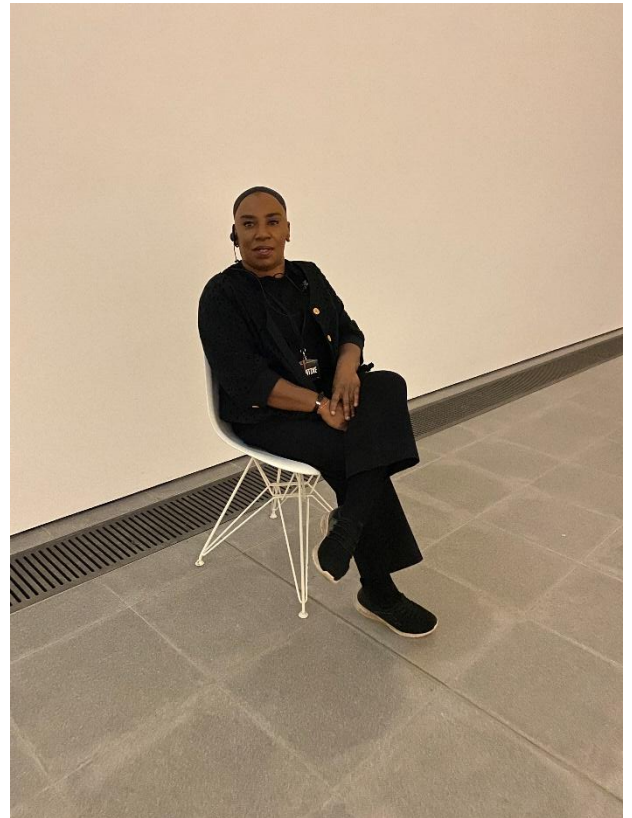


This is Gallery Host.

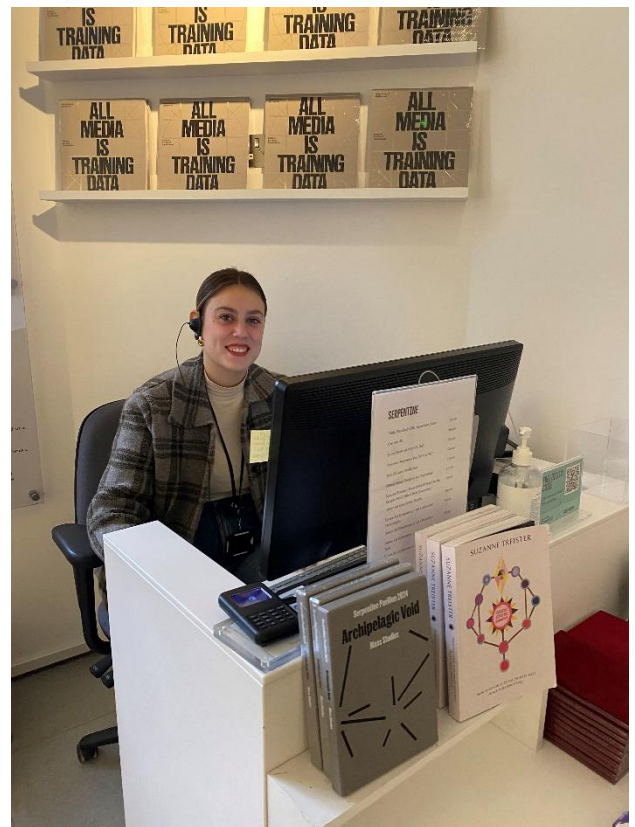
They wear a black uniform and a Serpentine Lanyard.

They can be found throughout the exhibition.

They can help with any questions you might have.



A Ticket Officer can also be found in the Serpentine North shop.



MAGAZINE CAFÉ:

The FRIENDS OF OURS Café is located at Serpentine North.

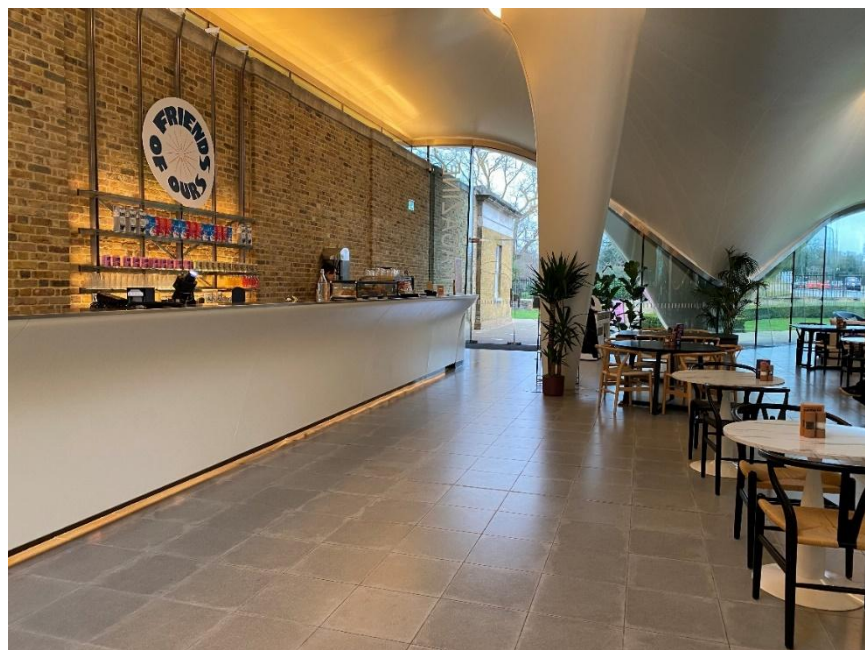
OPENING TIMES:

Monday: 12:00 – 18:00

Tuesday - Thursday: 10:00 – 18:00

Friday - Sunday: 10:00 – 19:00

For more information about the café and to see the menu, please see the link below: [Food & Drink - Serpentine Galleries](#)

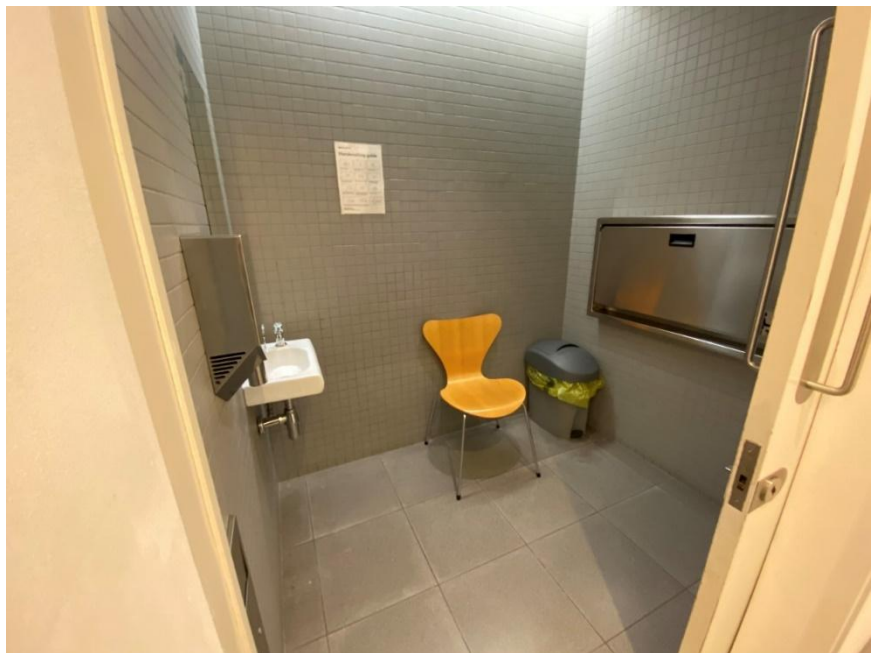


FACILITIES:

There are accessible toilets at both Serpentine South and North Galleries.



There are changing room facilities available at both Serpentine South and North Galleries.



A water fountain is available in the park outside of Serpentine South.



There is a wheelchair available at both Serpentine South and North Galleries.

To reserve a wheelchair please contact our Visitor Experience Team at information@serpentinegalleries.org



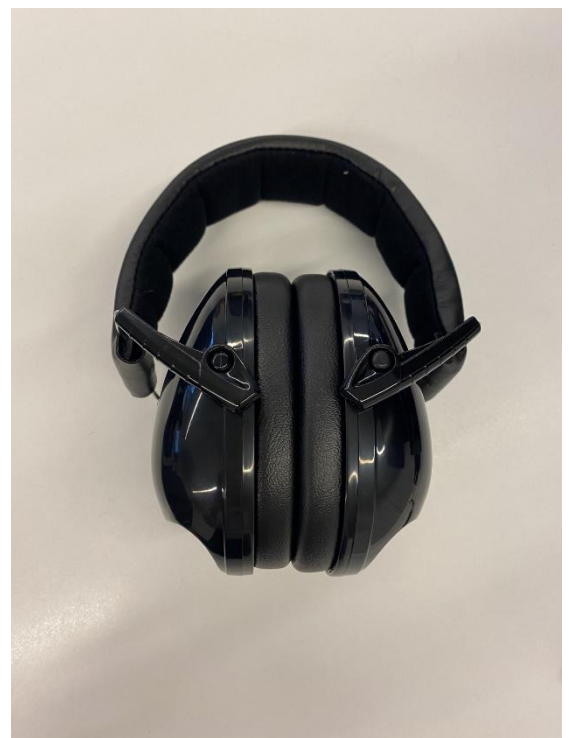
Foldable Stools are available to borrow at both Serpentine South and North Galleries.

Both Serpentine South and North Galleries are step free.



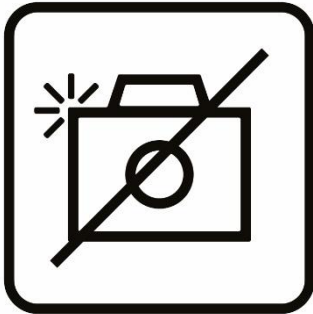
Unfortunately, there is no cloakroom available at both Serpentine South and North Galleries to store any belongings. Where possible, please only bring a small bag.

Ear Defenders are available to borrow at both Serpentine South and North Galleries.



SERPENTINE GALLERY RULES:

For the safety of our visitors and protection of the artwork on display please follow these rules when visiting our galleries.



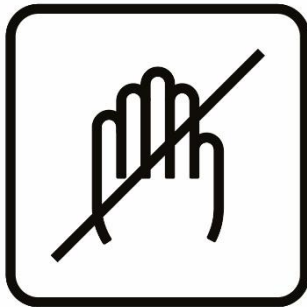
Photography is allowed without flash. Bright flashes can disturb other visitors and can be harmful to fragile artworks.



You cannot eat or drink inside the gallery. Food and drink can cause damage to artwork and create a slip hazard if spilled.



Only service animals are allowed inside the gallery.



You cannot touch the artwork. Touching artworks may damage them.



Backpacks must be carried around the gallery by hand or in front. Large backpacks might cause damage to artwork.

SERPENTINE

WE LOOK FORWARD TO YOUR VISIT.

Further information is available on our access page:

[Facilities & Access - Serpentine Galleries](#)

If you have any other questions or feedback, please contact us through:

Email: information@serpentinegalleries.org

Phone number: +44 020 7402 6075