

A photograph of an outdoor evening event at the Serpentine Gallery. In the background, a large, historic building with a prominent central dome and arched windows is illuminated from within. The foreground is filled with a crowd of people, mostly seen from the back, standing on a dark lawn. Several large, dark patio umbrellas are open, and strings of warm white lights are draped across the scene, creating a festive atmosphere. The sky is a deep blue with scattered white clouds. The text "SERPENTINE EVENTS" is overlaid in white, bold, sans-serif capital letters on the right side of the image.

# SERPENTINE EVENTS

# ABOUT

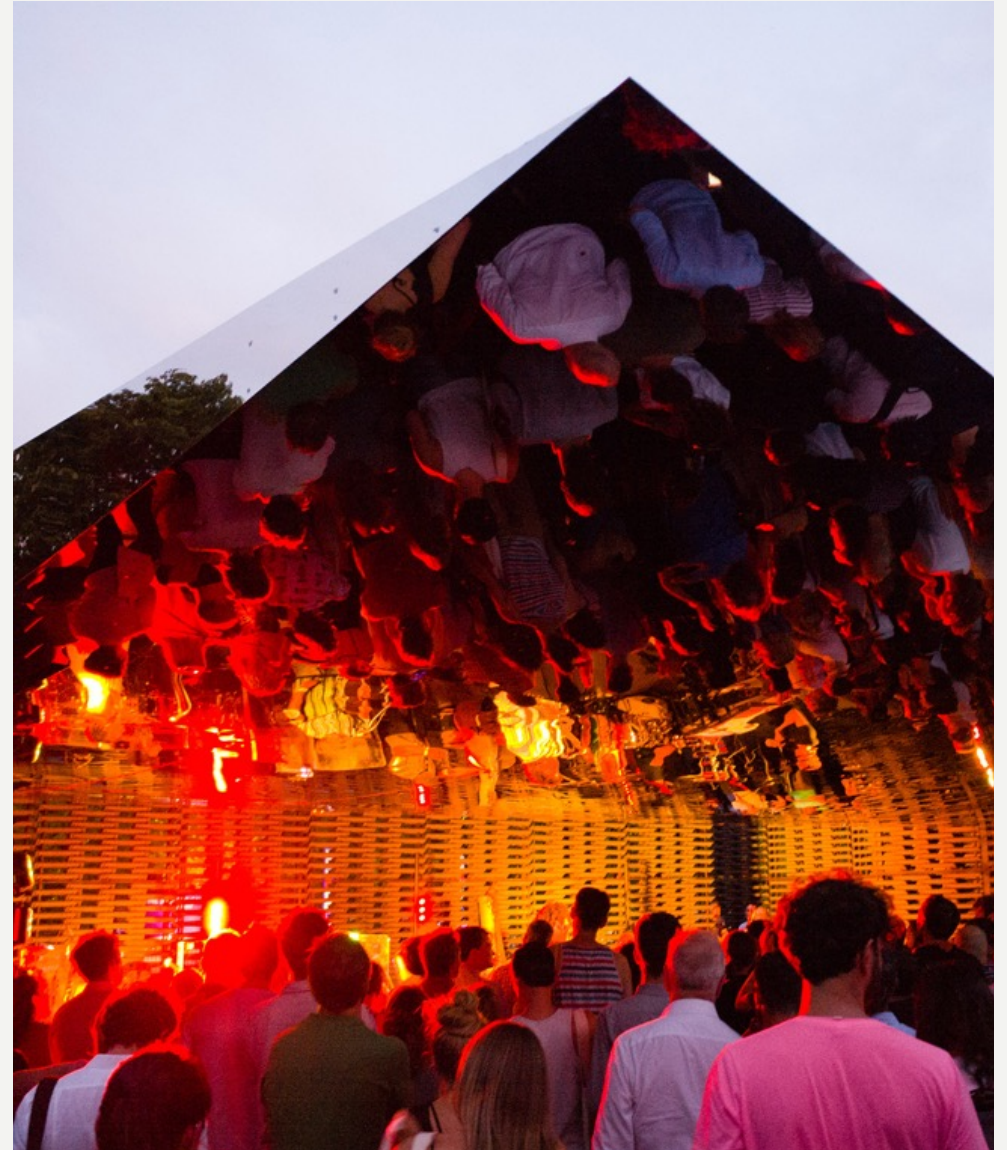
The Serpentine is one of the most widely recognised organisations in global contemporary art, design and architecture. Championing new ideas since it opened in 1970, the Serpentine has presented pioneering exhibitions of 2,000 artists, architects and designers over 50 years, showing a wide range of work, from emerging practitioners to the most internationally recognised artists and architects of our time.

Based across two sites Serpentine provides the perfect backdrop for any occasion. Located within the historic landscape of Kensington Gardens, Serpentine venues including South, North and the Magazine can be hired all year round as a unique venue for all types of events, including corporate receptions, product launches, fashion shows and private functions.

Serpentine is available for exclusive hire to our valued members – to learn about how you can be part of our dynamic individual giving schemes, access a tailored programme of special events, and host your event at Serpentine please contact the Events Team who can guide you through every step to create an unforgettable experience.

## Contact information:

[events@serpentinegalleries.org](mailto:events@serpentinegalleries.org)





# SERPENTINE NORTH



The Magazine Restaurant

# SERPENTINE SOUTH



The Serpentine Bridge

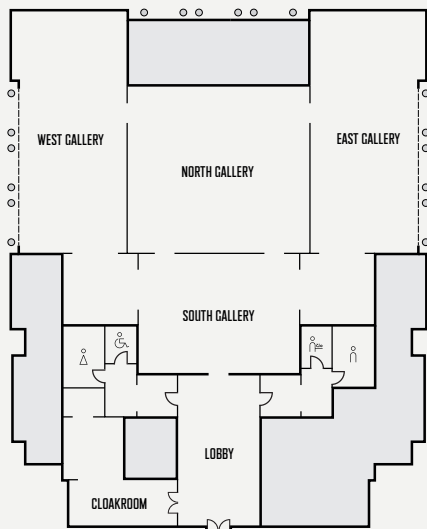
5 minute walk

The Serpentine lake

West Carriage Drive

# Serpentine South

Housed in a Grade II-listed former tea pavilion, Serpentine South is made up of four interconnecting gallery spaces which make it easy to position different elements of your event or use it as an open space.



## Serpentine South

Morning 08:00 – 09:30	Day 08:00 – 18:30	Evening 18:30 – 22:30	Full 08:00 – 22:30
£3,000	£15,000	£6,000	£20,000

All capacities within Serpentine South vary depending on the exhibition in place at the time. Please discuss with one of the events team to make sure we can accommodate your event.





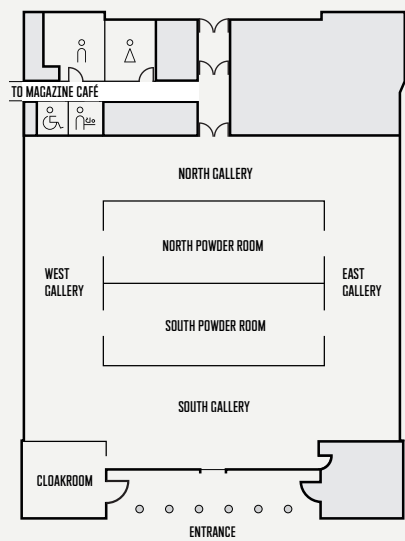






# Serpentine North

A former 1805 Grade II listed gunpowder store, Serpentine North is made up of two central rectangular rooms with exposed brick and beams, encompassed by a square bright and modern gallery perimeter. The Powder rooms work particularly well for intimate dinners or lounge spaces with the flowing perimeter of the galleries perfect for standing receptions.



## Serpentine North

Morning 08:00 – 09:30	Day 08:00 – 18:30	Evening 18:30 – 22:30	Full 08:00 – 22:30
£3,500	£15,750	£6,750	£21,000

Capacities within Serpentine North vary depending on the exhibition in place at the time. Please discuss with one of the events team to make sure we can accommodate your event.







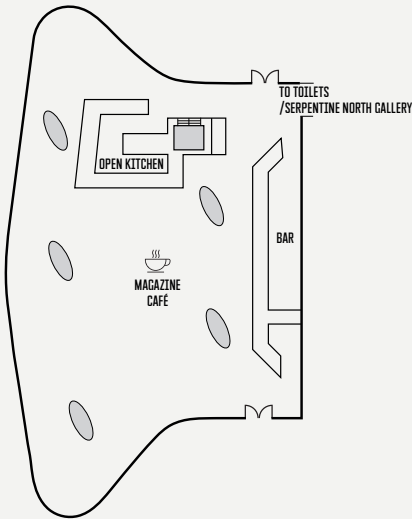


# THE MAGAZINE

Set in the beautiful Zaha Hadid extension of Serpentine North Gallery, The Magazine is Serpentine’s largest event space, operated by a dedicated in-house events team. This venue can be hired alongside the adjoining Serpentine North space or as a standalone space.

Please note that the Magazine is catered exclusively by Benugo.

Contact: Khaing Htwe  
+44 (0)20 7298 7552  
khtwe@benugo.com  
www.benugo.com  
@benugouk



## The Magazine

Standing	Seated Dinner	Theatre Style
200	90	100

Capacities of the Magazine and Serpentine North spaces combined are dependent on the current exhibits and therefore available on request.



*“I believe that there's no end  
to experimentation”*

Zaha Hadid, 2017





# HIRE FEES

	Morning 08:00 – 09:30	Day 08:00 – 18:30	Evening 18:30 – 22:30	Full 08:00 – 22:30
Serpentine South	£3,000	£15,000	£6,000	£20,000
Serpentine North	£3,500	£15,750	£6,750	£21,000
The Magazine	£1,500	£7,000	£5,000	£10,000
Magazine & North	£4,000	POA	£11,000	NA



# HIRE FEES

## Included with hire

<b>Events Manager</b>	Your dedicated event manager will be your main contact throughout the planning and delivery of your event
<b>Duty Manger</b>	Working alongside the Event Manger to ensure the safety and wellbeing of your guests and suppliers
<b>Duty Event Manager</b>	We always try to make sure your lead event manager will be on site throughout your event – however on some occasions events will be covered by our experienced Duty Event Manager.
<b>Facility Manager</b>	Serpentine facilities team will be onsite prior to all evens to ensure essential and additional services are in operation. If your event requires a member of facilities to remain on site for the duration of the event then additional charges will apply – please ask your Event Manager for further information.

## Additional Costs

<b>Security</b>	All events require a minimum level of security. Your event Manger will inform you of the number of security required for your event and the total cost prior to booking.
<b>Cleaning</b>	Cleaning services will be provided by our in house team. Standard event hours will incur a £250+VAT cleaning fee – this will be added to your booking information
<b>Visitor Experience Team</b>	For events that have requested the exhibitions to remain open we will provide a full team of Visitor Experience and exhibition invigilators. The total cost of this is subject to the exhibition – your event manager will be able to advice on this cost when requested. Please note that we will require a minimum of 2 weeks notice to keep exhibitions open beyond our standard opening hours.
<b>Early Access</b>	There is a £500+VAT per hour fee for any events that requires access before 08:00. The earliest access we are permitted to allow is from 06:00.



# APPROVED SUPPLIERS

We have hand-selected a list of industry leading approved suppliers for Serpentine Events. We invite you to contact your preferred suppliers directly for a quote. We are happy to advise upon the appropriate suppliers for your event requirements and budget.

## CATERING

### **Alexander & Björck**

Contact: Eva Berntsson  
+44 (0)20 3457 1700  
parties@alexanderandbjorck.com  
www.alexanderandbjorck.com  
@alexanderandbjorcklondon

### **At Home Catering Ltd**

Contact: Christophe Perrier  
+44 (0) 1932 862026  
christophe@athomecatering.co.uk  
www.athomecatering.co.uk  
@athome\_catering

### **By Word of Mouth**

Contact: Chloe Goreham  
+44 (0)20 8871 9566  
events@bywordofmouth.co.uk  
www.bywordofmouth.co.uk  
@bywordofmouthUK

### **Cellar Society**

Contact: Tuuli Tornstrom  
+44 (0)20 8453 7141  
enquiries@cellarsociety.com  
cellarsociety.com  
@cellarsociety

### **Clerkenwell Green**

Contact: Jade Farhangi  
+44 (0)7792 408095  
clerkenwellgreenevents@benugo.com  
http://www.clerkenwellgreen.com  
@clerkenwellgreenevents

### **Doggart & Squash**

Contact: Molly Gray  
0207 164 6182  
molly@doggartandsquash.com  
www.doggartandsquash.com  
@doggartandsquash

### **Last Supper Ltd.**

Contact: Jonathan Attwood  
0207 378 0101  
jonathan@lastsupperltd.co.uk  
www.lastsupperltd.co.uk  
@Lastsupperltd

### **Lettice Events**

Contact: Holly Congdon  
0207 820 1161  
info@letticeevents.com  
www.letticeevents.com  
@letticeevents

### **Lodge Catering**

Contact: Ann Woods  
+44 (0)20 8960 5794  
ann@lodge-catering.co.uk  
www.lodge-catering.co.uk  
@lodgeCatering

### **Lush By Tom Kerridge**

Contact: Lucy Trice  
01494 923 660  
hello@lushbytomkerridge.com  
www.lushbytomkerridge.com/  
@lushbytomkerridge/

### **Rocket Food Ltd**

Contact: Louisa Moule  
+44 (0)20 7819 9349  
parties@rocketfood.com  
www.rocketfood.com  
@rocketfoodltd

### **Social Pantry**

Contact: Gemma Bacon  
+44 (0)208 871 1949  
enquiries@socialpantry.co.uk  
www.socialpantry.com  
@social\_pantry

Please note that the Magazine is catered exclusively by Benugo.

Contact: Khaing Htwe  
+44 (0)20 7298 7552  
khtwe@benugo.com  
www.benugo.com  
@benugouk

# APPROVED SUPPLIERS

## AV & PRODUCTION

### **Dobson Sound Productions**

Contact: David Lewis  
+44 (0)20 8545 0202  
enquiries@dobsonsound.co.uk  
www.dobsonsound.co.uk  
@dobsonsound

### **Event Concept**

Contact: Emily Buckland  
+44 (0)20 7740 3988  
info@eventconcept.co.uk  
www.eventconcept.co.uk  
@EventConcept

### **Lightning Events Ltd**

Contact: Georgie Fifield  
+44 (0)20 8963 7980  
Georgie@lightning-events.com  
www.lightning-events.com  
@lightningevents

### **Light Motif**

Contact: Rob Mills  
+44 (0)20 7183 5381  
info@lightmotif.co.uk  
www.lightmotif.co.uk  
@lightmotifprod

### **Perfect Cartel**

Claire Berry  
+44 207 099 0619  
claire@perfectcartel.com  
https://www.perfectcartel.com/  
@perfectcartel

### **Wise Productions**

Contact: Doug Wintle  
+44 (0)20 8991 6922  
events@wiseproductions.co.uk  
www.wiseproductions.co.uk  
@wise\_productions

### **London Event Productions**

Contact: Ryan Tyler  
+44 (0)20 8224 7176  
ryan@eventproductions.london  
www.eventproductions.london  
@londoneventproductions

## SUNBRELLAS

### **Sunbrella Hire Ltd**

Contact: Claire Thomson  
+44 (0)14 8321 0142  
hire@sunbrella.co.uk  
www.rain-danceukgiantumbrellas.co.uk

## MUSICIANS & ENTERTAINMENT

### **Sternberg Clarke**

Contact: Jane Moore  
+44 (0)20 8877 1102  
jane@sternbergclarke.co.uk  
www.sternberg-clarke.co.uk  
@SternbergClarke

### **Euphonica**

Contact: Grace Barnett  
+44 (0)20 3397 9018  
grace.b@euphonica.com  
www.euphonica.com  
@euphonicalive

## FLORISTS

### **Veevers Carter Flowers**

Contact: Penny Lindeque  
+44 (0)20 7237 8800  
penny.lindeque@veeverscarter.com  
www.veeverscarter.com  
@VeeversCarter

### **Hayford & Rhodes**

Contact: Jemimah Jones  
+44 (0)20 3130 9219  
events@hayfordandrhodes.co.uk  
www.hayfordandrhodes.co.uk  
@hayfordandrhodesflowers

### **Lavender Green**

Contact: Colin Gray  
+44 (0)207 127 5303  
info@lavendergreen.co.uk  
www.lavendergreen.co.uk  
@LavenderGreenflowers

## MARQUEES

### **Berry Marquees Ltd**

Contact: Simon Sinclair  
+44 (0) 1784 471 410  
simon@berrymarquees.com  
www.berrymarquees.com  
@berrymarquees

### **Key Structures**

Contact: Charlie Spall  
+44 (0)7833467250  
info@keystructures.co.uk  
www.keystructures.co.uk  
@keystructures





# FIND US

Serpentine South Gallery  
Kensington Gardens  
London W2 3XA

Serpentine North Gallery  
West Carriage Drive  
Kensington Gardens  
London W2 2AR

# CONTACT US

**Freddie Huntington**  
Head of Events  
[freddieh@serpentinegalleries.org](mailto:freddieh@serpentinegalleries.org)

**Esme Evan-Cook**  
Events Manager  
[esmeec@serpentinegalleries.org](mailto:esmeec@serpentinegalleries.org)

**Jessica Peden**  
Events Manager  
[jessicaP@serpentinegalleries.org](mailto:jessicaP@serpentinegalleries.org)