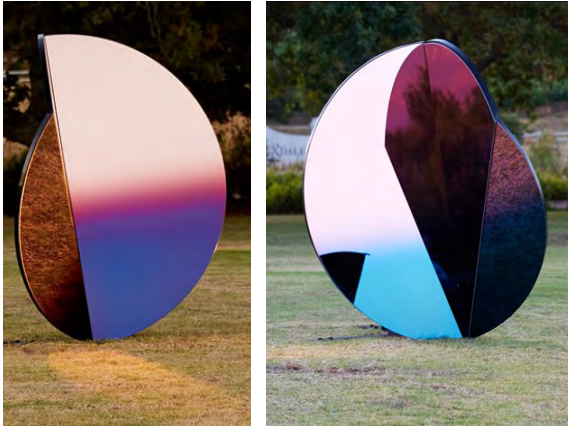


selected projects



FOLDED SKIES

Land sculpture and light installation

For an instant, a drop of sky lands in the landscape - each an instant in time. Our installation captures colours of the South African light - dawn, dusk, sunsets.

We are inspired by the iridescent qualities of our cities and landscapes - sometimes this is heightened by the chemical compounds in our cities' mining dust. We worked with the same pigment compounds (copper, aluminium, cobalt, ferrous) from these dusts to create instances of South African skies - a snapshot of light conditions at different times of the day. The shapes fold light, perspective and earth into each other, producing a blurred enmeshing of up and down, inside and outside, real and unreal.

Location: Stellenbosch, Western Cape, South Africa
Client: Jay Pather & Spier
Date: Dec '18 - Jan '19



#ETANOWNOW FOR UBER AFRICA

Urban furniture and light installation design

4 minute walk to the stop. Head south-east. At the interchange, make sure that you have enough space on the other side of the crossing where there are several dozens of people standing and waiting for taxis. Turn left onto Juta street. Be careful on that corner because it is dark and it is Joburg. A project brief from Uber to light up Joburg, transformed into: Do you have a space to wait with dignity? A safe route to walk? Does your phone have enough juice? Need WiFi? A place to wait is more than just a place to wait.

A new set of #LightUp #Safespaces - a set of street lights for waiting. Sit, charge, chat, look, watch, read. Programmed Activities and eyes on the street at night. Safety blue. Uber blue.

Location: Braamfontein Johannesburg
Client: Uber Africa
Date: 2018-2019

COUNTERSPACE



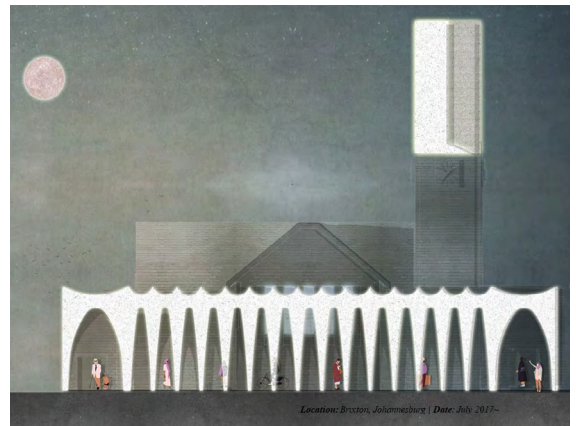
CONVERSATION ROOMS

Installation and choreography design and curation

What unfolds is a set of spaces for the prompting and recording of conversations about architecture - used in different contexts - one to one, a group discussion, a sharing circle, a solitary moment, a date. The project is conceived through a set of purpose-designed furniture pieces and choreographic movement design to foster collision, intimacy, facing toward and facing away - alternative forms for terms of engagement, in space.

The arrangements for gathering and conversation encourage an address of institutional spaces and power dynamics, and offer an opportunity for knowledge exchange and future imaginaries of the spaces we learn and practice within.

Location: Braamfontein, Johannesburg
Date: September 2019



BRIXTON MOSQUE

Design for additions and alterations to a mosque

Allahu Akbar. 5 times a day. The church bells used to clang too, 9 o'clock Sundays. A cacophony. A melody. A new set of harmonies. Sunrise. Sunset. The conversion of an old Dutch reformed church into a mosque. A minaret made of light appears only at 5 times in the day.

On Fridays the new street edge is animated. Children climb. Traders trade. People meet. Visit and revisit. Present and represent. A form emerges, a slow consideration of new and old dreamers, wishes, worshipers from two religions and times - the architectures pray together - reveal and conceal, hide and seek, and past, present, future

Location: Brixton, Johannesburg
Date: 2017 - current

selected projects



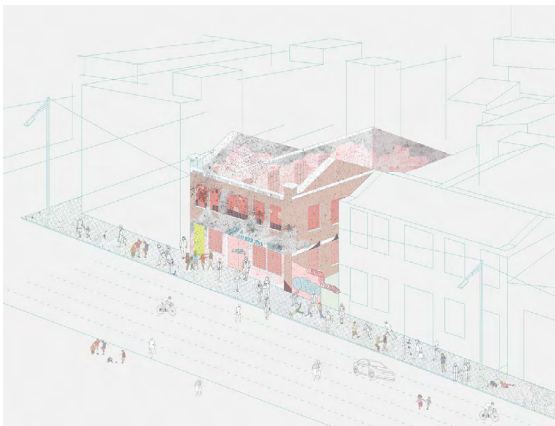
PAN AFRICAN FOOD STATION

Research and installation design

What colour is your jollof? This project looks at the rituals surrounding food spaces and food practices in Johannesburg. Conceived as an installation for the Wuzhen Biennale in China, the project proposes a dinner table where visitors are invited to take a seat at the table and share a meal with the person next to them, while reading recipes, traditions and rituals from across Africa, hybridised by Joburg. The configurations of the table are drawn and extrapolated from the eating rituals of Yeoville, Johannesburg, a cosmopolitan place, and Sanza Sandile's Pan-African plate concept.

Location: Wuzhen Biennale, China

Date: Dec '17 - present



AESTHETICS OF ABSENCE / #WHEREAREYOU NOW JHB?

Self-led research project

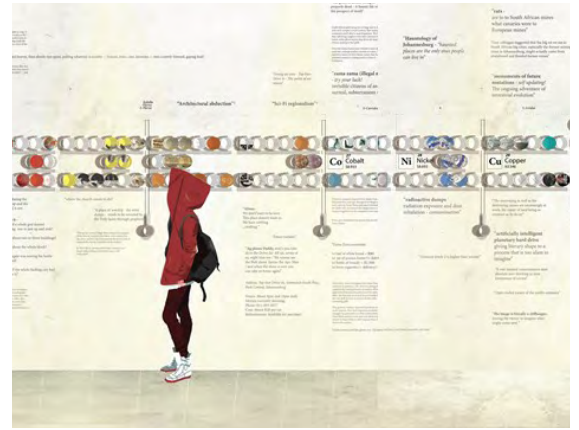
An ongoing archive in a space of erasure. Fluctuating, disappearing, now and then, before and after, Johannesburg policy, erasure of the unsightly, cycles of use, traces of relics, imprinted memories, architecture coming alive as communities cluster, daily schedule, Midnight to 3am bustling with waste-pickers sorting their waste, at sunrise they vacate the building on their daily routes. Inside the building, dark, cold, no sense of time. Recreated, re-purposed time, existing as a place within itself.

The work was undertaken collaboratively, with an essay contribution by Jhono Bennett from ItoI Agency for Engagement, and graphic contributions by Euridice Pavia.

Location: Johannesburg, South Africa

Date: 2016

COUNTERSPACE



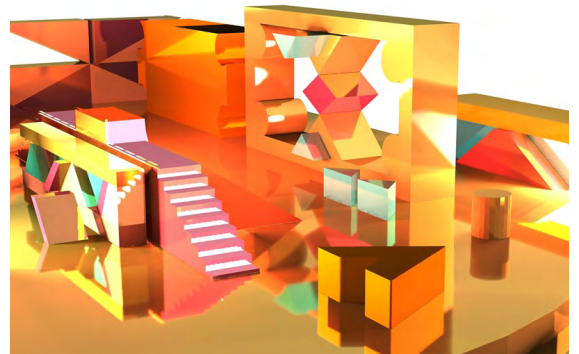
LOST & FOUND: PHANTOMS OF SPACES AND TIMES

Research and installation design

On a satellite map, a zoom-out view of the city shows yellow-and-white sand mountains of mining residue—massive and imposing man-made natures scripted by subterranean gold—so vast that their monumentality lays bare the scale of exploitation by the colonial and Apartheid regimes. Zooming in on the dust mountains reveals architectures beyond the limits of formal planning and design. The mountains are sites of invisible cities. A face-mask, an old rubber glove, and a makeshift pick-axe. A frosted glass bottle with a label etched in Dutch script. Plastic drive-in movie posters advertising a Valentine's Special. A Zion-Christian star badge, which has become host to a coral-like formation of turquoise crystals. In Lost and Found, our minds fill in the stories contained in these mysterious artifacts.

Location: Chicago, USA

Date: Sep '15 - Jan '16



HANDS ON MATHS FOR PLAY AFRICA

Installation and system design

Deep Time. Indigenous Knowledges. Kit-of-parts assembly. Volume. Indigenous algorithms and geometries. Click into place. Snap. Lock. Dispatch. Clip. Stack. Pack. Unravel. Reorder. Unorder. Tumble. Fumble. Mismanage. Step-up. Totem. Tessellate. Pattern. Repeat. Collocation. Opposition. Apposition. Scramble. Scurry. Push. Juxtaposition. Assemble geometries into place. New platonic orders. New Ndebele Orders. Other Fundamentals. A new coded set of swatches and patterns.

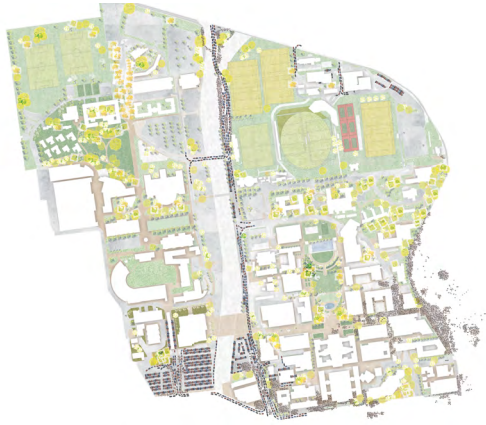
Lightweight interlocking stackable volumes - trihedron, triangulated, tessellated shapes in super-dense injection moulded expanded foam. 3d children's puzzle to learn about geometries, volumes and mathematical universes.

Location: Johannesburg South Africa

Client: Play Africa

Date: 2018

selected projects



FATWALLS & WITS UNIVERSITY MOVEMENT MAPPING

Research, community participation, mapping & architectural intervention design

Anger. Protests. Fees must fall. Traffic. Cars. Taxis. Rain. Sun. A harsh campus edge. Walls. Walls. Walls. Fences. Fire. Gates. 2 second boom gate delay. Watch out for spikes. Fortress.

From thick barren barriers into fat walls with functions. A buffer strip. A mediator between the city and the school. Student dignity. A wall as a space. An inhabitable edge. A two-way street. A cigarette seller. Vending machines. A new landscape of infrastructures - lighting, seating, waiting. A 1.5 person seat for laptops, shopping, a child.

Location: Braamfontein, Johannesburg

Date: 2017



AN INVENTORY OF FEMINIST UPHEAVAL: FILM

Screenplay and film direction

'We broke through the earth and now we fall through time
Deep gashes in the ground
We scale the edges of our knowing
What we stand on is not masonry
It is the torn place unhealed
The footholds come from how unclear the break.'

- Alexis Pauline Gumbs

Working with students and staff from the Graduate School of Architecture as part of the Trans-We Should All Be Feminists short film project, this film was written, directed and produced by Sumayya Vally and Dr Huda Tayob, together with Prof Lesley Lokko.

Location: Johannesburg, South Africa

Date: 2019

Film production by Zaheer Cassim, One Way Up Productions

COUNTERSPACE



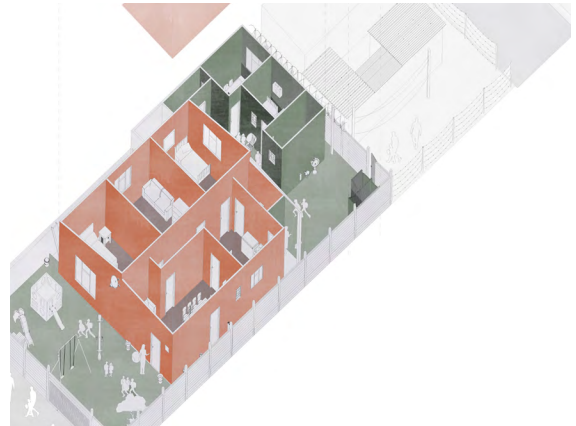
COMMUNITY MAPPING IN FLEURHOF

Research, community participation, mapping & architectural intervention design

How to make friends and enemies. A new Community WhatsApp group. A recording booth for oral histories of a forgotten coloured community held at the Dragon-boat Race Day. A recording booth for aspirations of the young community held at a pop-up market day. Stories are data too. Soft data. Waiting, counting, 1,2,3 cars speeding by, people catching taxi's walking to work, counting, collecting, capturing. A chatter in the street, gossip from the neighbour. Tempers, tantrums and new friends. Danger spots, long routes home, sport hangouts, economic livelihoods, imagined futures - emerge visible on a set of maps, drawings and film.

Client: Johannesburg Development Agency

Date: 2017



WIEGO: THE COST OF BEING INFORMAL

Research, community participation, mapping.

10 minute walk to the bathroom with a candle. Cat calls, low light - I make it with urgency in my step. 1 hour taxi drive in traffic with a bag of meat to sell later, to pay my rent and send money home to my children. A 10km round trip pulling rubbish to be sold, no bathrooms, no water. My hands are dry and cracked.

Research project of the lived home and work experiences (and the spaces and time in between) to identify infrastructural inadequacy and inefficiencies, and the exacerbation of economic opportunity these hardships pose for women in informal settlements in Africa. Transport, sanitation, access to water and building ecologies are studied and documented.

Location: Ivory Park, Midrand

Client: WIEGO

Date: 2019

selected projects



PATCH: PARK 2 DRIVE

Design for a new commercial and industrial development

Anger. Protests. Fees must fall. Traffic. Cars. Taxis. Rain. Sun. A In a series of opening and closing, lifting and dropping planes and spatial manoeuvres, Counterspace reimagines a conglomerate site of two erven which lie adjacent, but are actually attributed to two separate planning districts. The project offers a radical anthesis to homogeneity: negotiating the two schizophrenic identities of the suburbs between which it sits: both economically and culturally. Using signage, colour, cultural motifs and programme, a meshed hybrid identity is created, -- fusing elements from the nearby Dragon City China Mall with that of the adjacent Indian migrant suburb of Mayfair - eventually crystallising into a amalgamated storage facility, leisure space and prolific hydroponic farm.

Location: Mayfair Johannesburg

Date: 2018

expanded selected projects list

INFO@COUNTERSPACE-STUDIO.COM

WWW.COUNTERSPACE-STUDIO.COM

Folded Skies

2018| Stellenbosch, Western Cape
Design of four land-sculptures which incorporate chemically-treated mirror and steel, referencing sunrise, midday, sunset and midnight in Johannesburg dusty skies.

ETANowNow for Uber

2019| Johannesburg, Cape Town
Conceptualisation for a light-based urban-scale furniture installation for night-time pedestrians, to improve interactivity, safety and way-finding.

WEIGO

2019 | Ivory Park, Midrand
Spatial and economic research of various women working in informal sectors with a focus on inadequate urban ecological and transport infrastructure which limits economic mobility.

Impact of Land Systems on Micro Economic Growth

2016| Ivory Park, Midrand
Broad study into proliferation of micro-enterprise and its relationship to land dispossession and land politics in an informal settlement in Johannesburg.

Imbeleko Arts Centre

2016| Kwa-Zulu Natal
Design for a new cultural-based learning centre for girl-children in a rural area to promote excellence in arts, schooling and leadership for women in the community.

Feature in DOMUS Top 100+

2019
Selection by committee for cultural innovation for 2019. See full details here: <https://drive.google.com/file/d/1COU2M4QLas3ff7nBhbGmBfqlxDwKOfWy/view>

Conversation Rooms

2019| Braamfontein, Johannesburg
Design and choreography for a series of varying gatherings, collisions and discussions which foster criticality around learning institutions and their spatiality.

Lost & Found

2015 | Chicago Cultural Centre
Research and installation design depicting the peculiar and sometimes clandestine practices on Johannesburg's mine dumps (industrial wastelands)

Afterimages: Ponte Archive

2018-2019| Doornfontein, Johannesburg. Drawing and representation of archival matter and waste archaeologies at Ponte City Apartments, to parallel narratives of residents, often migrants to Johannesburg.

Patch: 2 Park Drive

2018 | Mayfair Johannesburg
Design for a meshed cultural, retail and industrial development which capitalises on two neighbouring communities (Chinese and Indian migrant suburbs and markets)

Land of Skate

2016| Jeppestown Johannesburg
Conceptualised for international organisation Skateistan's headquarters in SA for a space which combines play, choreography, flexibility and creativity for disadvantaged children.

What is Radical Today?

2019| London
Participation in 'What is Radical Today? 40 Positions on Architecture' held at the Royal Academy of Arts, London.

Hands on Maths

2018| Johannesburg
System and installation design for life-scale learning tool for children which translates abstract mathematical concepts derived from Ndebele art.

Aesthetics of Absence

2017| Johannesburg
Self-driven research project depicting the life, livelihoods and political mistreatment of Johannesburg's so called 'bad-buildings', which have often housed immigrants in the city.

FATWall & Movement Mapping, Wits

2016| Braamfontein Johannesburg
Urban-scale mapping of student routes, vulnerable areas, and economic and place-making opportunities on a prominent South African university campus.

Children's Courtroom

2019| Johannesburg
Design for a children's installation depicting a South African law-court, to promote children's access to their rights, and exposure to judicial processes in a safe environment.

Women in Science Exhibition

2019| Johannesburg
Light art installation which combines scientific theory with art for school in Johannesburg.

JDA Handbooks

2019| Johannesburg
Research and booklet writing for city policy around safety, equality, community participation and design strategies in Johannesburg for UN Habitat.

Brixton Mosque

2017| Brixton Johannesburg
Design for alterations to an existing historical structure in flux, which accommodates myriad of diverse nationalities, practicing Islam in a former NGK church.

Fleurhof UDF

2017| Soweto, Johannesburg
Research and documentation of lived experiences of a widely under-served community west of the city. Included interactive story-booths, economic and transport mapping strategy.

An Inventory of Feminist Upheaval

2019| Johannesburg
Screenplay and film direction by Sumayya Vally and Huda Tayob depicting perspectives and imaginaries of gender-based experience in architecture in South Africa.

Church Square Regeneration Project

2019| City of Tshwane
Design and re-imagination of a historic yet under-served national key point square, which is proliferated by local residents, state-workers, lawyers and tourists.

Politics of African State Architecture Installation

2019| Johannesburg
Installation design for a sociologist at SOAS University for a series of repositories depicting South African state building's and citizenry opinions of these structures.

Squiggle House

2018| Nelspruit
Design for a structure which conceptualises bands of walls as enclosures, and where all service functions are tucked away in the walls.